

Donate to Ministry

Dear Prospective Donor,

Parents throughout the country can benefit from formative support in their child-rearing efforts. Schools seek formation education so that educators are tooled to assist parents in their task of character formation. The *IHM Office of Formative Support* desires to make its services available to all who request assistance. Sadly, travel expenses eliminate some organizations from receiving our services. Still other organizations have no funds for speaker fees.

Folks who offer assistance in any form are considered benefactors to the Congregation of the Sisters, Servants of the Immaculate Heart of Mary – a group of women religious in the Catholic Church, pioneers in education since 1845 (www.ihmimmaculata.org). Benefactors are remembered in the daily prayer of the sisters. Will you join the IHMs in providing formative-education to parents and teachers?

The Sisters, Servants of the Immaculate Heart of Mary, Immaculata, PA are a non-profit, tax-exempt organization under 501(c) (3) of the Internal Revenue Code. Donations are tax deductible.

If you desire to donate to this ministry please contact:

Sister Patricia M. McCormack, IHM
DrPatMcCormack@aol.com
703-237-2891

Consider making a donation in one of the following ways:

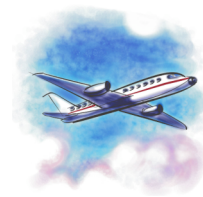
Monetary Donations



Lodging



Frequent Flyer Miles



Restaurant Gift Card



Rental Car - or - Gas Gift Card

